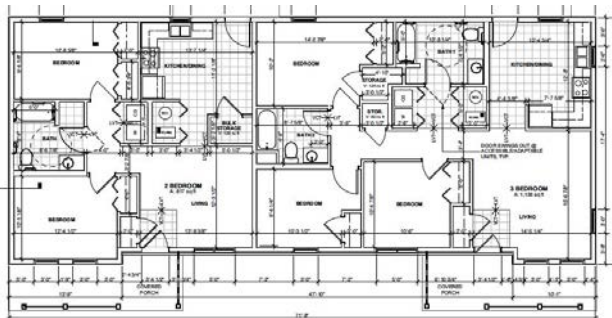
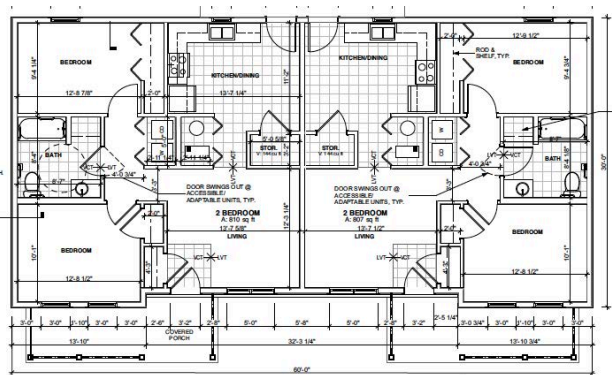


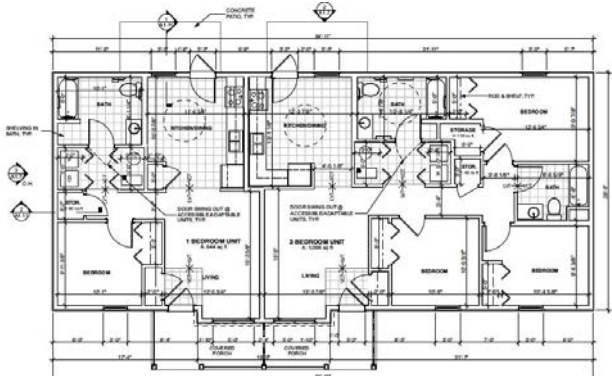
Layouts



2BR and 3BR



2BR and 2BR



1BR and 3BR



Directions

Rider Place Apartments is located adjacent to Sarah Bush Health Clinic and First Mid Bank & Trust.



(p) 217.345.2414
(f) 888.658.4687

leasing@yost-management.com

Property Management Services provided by
Yost Management Services, Inc.
www.yost-management.com



Rider Place Apartments

9 Wills Place
Arcola, IL 61910
(p) 217.345.2414
(f) 888.658.4687
leasing@yost-management.com
www.yost-management.com



Welcome

We appreciate your interest in Rider Place Apartments of Arcola. We are managed by Yost Management out of Charleston, Illinois.

We provide modern housing for affordable pricing. We are a Tax Credit program approved by the Illinois Housing Development Authority.

How to Apply

An application must be filled out & returned to our office along with an application fee of \$31.00. The security deposit can be broken up over a Two (2) month period if necessary.

Apartment Size

Rider Place Apartments has One, Two, and Three-bedroom apartments available for lease. Our one bedroom is 544 sq. feet., Our two bedroom is 802 sq. ft., and our three bedroom is 1100 sq. ft.

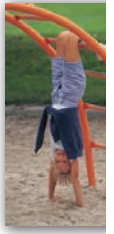
Utilities

Rider Place Apartments provides your trash service for you. You are responsible for your Ameren (electric), Water (City of Arcola), cable, and telephone service.



Property Amenities

- Playground for your children
- Trash Service
- Refrigerator & Electric Stove
- Handicap Accessible Units
- Central Air
- Easy Access Parking
- 24 Hour Maintenance
- Lawn Care & Snow Removal
- Washer & Dryer Hook-Ups



Prices

- 1 Bedroom \$475/month
- 2 Bedroom \$600/month
- 3 Bedroom \$650 month

Income Guidelines

Your application can only be processed with our development if your annual income is under the below amounts for the size of your family:

- 1 person under \$33,900/year
- 2 persons under \$38,700/year
- 3 persons under \$43,560/year
- 4 persons under \$48,360/year
- 5 persons under \$52,260/year